

# Beutel Goodman Income Fund, CLASS B

This document contains key information you should know about the Beutel Goodman Income Fund. You can find more details in the Fund's simplified prospectus. Ask your representative for a copy. Alternatively, contact Beutel, Goodman & Company Ltd. at 1-855-247-9954, e-mail: [mutualfunds@beutelgoodman.com](mailto:mutualfunds@beutelgoodman.com), or visit [www.beutelgoodman.com](http://www.beutelgoodman.com). **Before you invest in any fund, consider how the fund would work with your other investments and your tolerance for risk.**

## QUICK FACTS

Fund Code:	BTG305
Date class started:	September 27, 2010
Total value of the Fund on March 29, 2019:	\$1,086,362,546
Management expense ratio (MER):	1.19%

Fund Manager:	Beutel, Goodman & Company Ltd.
Portfolio Manager:	Beutel, Goodman & Company Ltd.
Distributions:	Last business day of March, June and September, and in December
Minimum investment:	\$5,000 initial, \$100 each subsequent

## WHAT DOES THE FUND INVEST IN?

The Fund seeks to earn a high rate of income return by investing primarily in fixed-income securities of Canadian government and corporate issuers.

The charts below provide a snapshot of the Fund's investments on March 29, 2019. The Fund's investments will change.

TOP 10 INVESTMENTS (March 29, 2019)	% of Fund Value
1 Province of Ontario 2.40% - Jun 2 26	7.6
2 Province of Ontario 2.60% - Jun 2 25	5.3
3 Government of Canada 2.75% - Dec 1 48	4.9
4 Government of Canada 2.00% - Jun 1 28	2.7
5 Province of Ontario 2.90% - Jun 2 49	2.5
6 Province of British Columbia 2.95% - Dec 18 28	2.4
7 Royal Bank of Canada 2.03% - Mar 15 21	2.2
8 Province of Ontario 2.90% - Jun 2 28	2.2
9 Bank of Montreal 2.85% - Mar 6 24	2.2
10 Province of Alberta 2.90% - Dec 1 28	2.2
<b>Total percentage of top 10 investments:</b>	<b>34.0</b>

Total number of investments: 114

Investment Mix – Asset (March 29, 2019)	% Weight
Fixed Income:	
Gov't of Canada Bonds	17.36
Corporate Bonds	43.83
Provincial Bonds	36.45
Municipal Bonds	1.54
Cash and Other	0.82
<b>Total</b>	<b>100.00</b>

Investment Mix – Bond Quality (March 29, 2019)	% Weight
Fixed Income:	99.18
AAA	21.81
AA	49.45
A	16.51
BBB	11.41
Cash and Other	0.82
<b>Total</b>	<b>100.00</b>

## HOW RISKY IS IT?

The value of the Fund can go down as well as up. You could lose money.

One way to gauge risk is to look at how much a fund's returns change over time. This is called "volatility".

In general, funds with higher volatility will have returns that change more over time. They typically have a greater chance of losing money and may have a greater chance of higher returns. Funds with lower volatility tend to have returns that change less over time. They typically have lower returns and may have a lower chance of losing money.

## RISK RATING

Beutel, Goodman & Company Ltd. has rated the volatility of this Fund as **low**.

This rating is based on how much the Fund's returns have changed from year to year. It doesn't tell you how volatile the Fund will be in the future. The rating can change over time. A fund with a low risk rating can still lose money.



For more information about the risk rating and specific risks that can affect the Fund's returns, see the Risk section of the Fund's simplified prospectus.

## NO GUARANTEES

Like most mutual funds, this Fund doesn't have any guarantees. You may not get back the amount of money you invest.

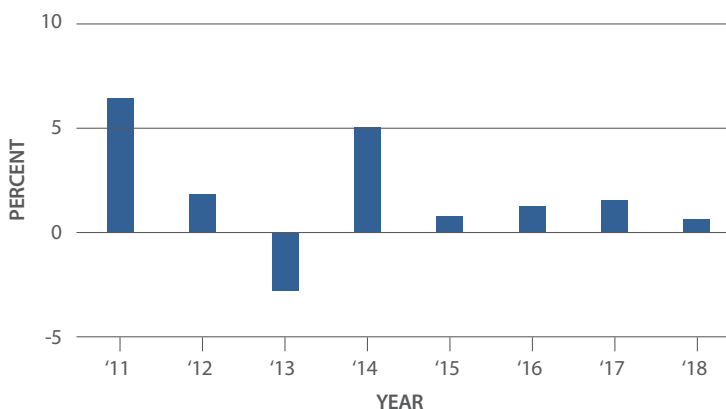
## HOW HAS THE FUND PERFORMED?

This section tells you how Class B units of the Fund have performed over the past 8 years. Returns are after expenses have been deducted. These expenses reduce the Fund's returns.

## YEAR-BY-YEAR RETURNS

This chart shows how Class B units of the Fund have performed in each of the past 8 years. The Fund dropped in value in 1 of the past 8 years.

The range of returns and change from year to year can help you assess how risky the Fund has been in the past. It does not tell you how the Fund will perform in the future.



## BEST AND WORST 3-MONTH RETURNS

This table shows the best and worst returns for Class B units of the Fund in a 3-month period over the past 8 years. The best and worst 3-month returns could be higher or lower in the future. Consider how much of a loss you could afford to take in a short period of time.

	Return	3 months ending	If you invested \$1,000 at the beginning of the period
<b>Best return</b>	4.38%	January 2015	Your investment would rise to \$1,044
<b>Worst return</b>	-3.56%	December 2016	Your investment would drop to \$964

## AVERAGE RETURN

The annual compound return for Class B units of the Fund was 2.11% since inception. If you had invested \$1,000 in this class of the Fund on September 27, 2010, your investment would now be worth \$1,187.

## WHO IS THIS FUND FOR?

Investors who:

- Have a medium to long-term time horizon
- Have a low tolerance for volatility and risk
- Seek a steady stream of income

## A WORD ABOUT TAX

In general, you'll have to pay income tax on any money you make on a fund. How much you pay depends on tax laws where you live and whether or not you hold the Fund in a registered plan, such as a Registered Retirement Savings Plan, or a Tax-Free Savings Account.

Keep in mind that if you hold the Fund in a non-registered account, fund distributions are included in your taxable income, whether or not they are received in cash or reinvested in additional units of the Fund.

## HOW MUCH DOES IT COST?

The following table shows the fees and expenses you could pay to buy, own and sell Class B units of the Fund. The fees and expenses – including any commissions – can vary among classes of a fund and among funds. Higher commissions can influence representatives to recommend one investment over another. Ask about other funds and investments that may be suitable for you at a lower cost.

### 1. Sales Charges

You must pay a sales charge when you buy this class of units. The sales charge is detailed below:

Sales Charge Option	What you pay		How it works
	In percent (%)	In dollars (\$)	
Sales Charge	0% to 4% of the amount you buy	\$0 to \$40 on every \$1,000 that you buy	<ul style="list-style-type: none"> <li>• You and your representative decide on a rate.</li> <li>• The initial sales charge is deducted from the amount that you buy. It goes to your representative's firm as a commission.</li> </ul>

## 2. Fund Expenses

You don't pay these expenses directly. They affect you because they reduce the Fund's returns.

As of December 31, 2018, the Fund's expenses were 1.19% of its value. This equals \$11.90 for every \$1,000 invested.

	Annual rate (as a % of the Fund's value)
<b>Management expense ratio (MER)</b> This is the total of the Fund's management fee (including the trailing commission) and operating expenses. Beutel Goodman waived some of the Fund's expenses. If it had not done so, the MER would have been higher.	1.19%
<b>Trading expense ratio (TER)</b> These are the Fund's trading costs.	0.00%
<b>Fund Expenses</b>	1.19%

## 3. More About the Trailing Commission

The trailing commission is an ongoing commission. It is paid for as long as you own the Fund. It is for the services and advice that your representative and their firm provide to you.

Beutel, Goodman & Company Ltd. pays the trailing commission to your representative's firm. It is paid from the Fund's management fees and is based on the value of your investment.

The trailing commission of 0.50% is paid out of the management fee. This equals \$5.00 each year for every \$1,000 invested.

## 4. Other Fees

You may have to pay other fees when you buy, hold, sell or switch units of the Fund.

Fee	What you pay
Switch Fee	You may have to pay to your representative up to 2% of the value of the units you switch
Short-term Trading Fee	You may have to pay the Fund up to 2% of the amount you switch or redeem if you invested in the Fund for less than 30 days

## WHAT IF I CHANGE MY MIND?

Under securities law in some provinces and territories, you have the right to:

- withdraw from an agreement to buy mutual funds within two business days after you receive a simplified prospectus or Fund Facts document; or
- cancel your purchase within 48 hours after receiving confirmation of the purchase.

In some provinces and territories, you also have the right to cancel a purchase, or in some jurisdictions, claim damages, if the simplified prospectus, annual information form, Fund Facts document or financial statements contain a misrepresentation. You must act within the time limit set by the securities law in your province or territory.

For more information, see the securities law of your province or territory, or ask a lawyer.

**FOR MORE INFORMATION:** Contact Beutel, Goodman & Company Ltd. or ask your representative for a copy of the Fund's simplified prospectus and other disclosure documents. These documents and the Fund Facts make up the Fund's legal documents.

**Beutel, Goodman & Company Ltd.**

20 Eglinton Avenue West, Suite 2000, P.O. Box 2005, Toronto, Ontario M4R 1K8

Telephone: 416-932 6403 • Toll-free: 1-855-247-9954 • E-mail: [mutualfunds@beutelgoodman.com](mailto:mutualfunds@beutelgoodman.com)  
[www.beutelgoodman.com](http://www.beutelgoodman.com)

To learn more about investing in mutual funds, see the brochure Understanding mutual funds, which is available on the website of the Canadian Securities Administrators at [www.securities-administrators.ca](http://www.securities-administrators.ca).